

RP432G400LAA

Manual técnico

Fabricante: RISCO Group LTD
 Dirección: 14 Hachoma Street 75655 Rishon LeZion Israel
 Nombre de la Marca: RISCO Group LTD
 Modelo: RP512G4T
 Número de parte: RP432G400LAA
 Descripción del producto: Módulo 4G con antena



La tarjeta RP432G400LAA contiene un módulo de radiofrecuencia de la marca TELIT y modelo LE910C1-LA con código FCC ID R17LE910CXLA.

El módulo de radiofrecuencia trabaja bajo los parámetros que se exponen a continuación.

Los parámetros se han extraído del manual de Telit “LE910Cx HW User Guide”, Doc#: 1VV0301298 Rev. 32 – 2021-03-23.

1. Funcionamiento e interoperabilidad con la red

El módulo LE910C1-LA de la tarjeta RP432G400LAA es un dispositivo enchufable que le permite al panel de alarma LightSYS Plus comunicarse con las redes de telefonía móvil GSM (2G) /HSPA+/ LTE (4G).

2. Parámetros de operación

El módulo LE910C1-LA es compatible con los modos GSM850 (2G), EGSM900 (2G), DCS1800 (2G), PCS1900 (2G), HSPA+ y LTE (4G). Las frecuencias de operación de dichos modos se ajustan a las especificaciones del consorcio 3GPP reflejándose las bandas de operación en la tabla 1.

Variante	2G	HSPA+	LTE FDD	LTE TDD	TD-SCDMA
LE910C1-NA	B2, B3, B5, B8	B1, B2, B4, B5	B1, B2, B3, B4, B5, B7, B28	-	-

Tabla 1: Bandas de frecuencia según modo de operación

En la tabla 2 se muestran las características detalladas de cada una de las bandas en términos de rangos de frecuencia de operación, canales de radiofrecuencia, modulación y potencia máxima de transmisión.

Modo	Frec. Tx (MHz)	Frec. Rx (MHz)	Canales	Modulación	Potencia máxima (dBm)
PCS 1900 (B2)	1850.2 ~ 1909.8	1930.2 ~ 1989.8	512 ~ 810	GSM	33
DCS 1800 (B3)	1710 ~ 1785	1805 ~ 1880	512 ~ 885	GSM	33
GSM 850 (B5)	824.2 ~ 848.8	869.2 ~ 893.8	128 ~ 251	GSM	33
EGSM 900 (B8)	890 ~ 915	935 ~ 960	0 ~ 124	GSM	33
EGSM 900 (B8)	880 ~ 890	925 ~ 935	975 ~ 1023	GSM	33
HSPA+ (B1)	1920 ~ 1980	2110 ~ 2170	Tx: 9612 ~ 9888 Rx: 10562 ~ 10838	WCDMA	24
HSPA+ (B2)	1850 ~ 1910	1930 ~ 1990	Tx: 9262 ~ 9538 Rx: 9662 ~ 9938	WCDMA	24
HSPA+ (B4)	1710 ~ 1755	2110 ~ 2155	Tx: 1312 ~ 1513 Rx: 1537 ~ 1738	WCDMA	24
HSPA+ (B5)	824 ~ 849	869 ~ 894	Tx: 4132 ~ 4233 Rx: 4357 ~ 4458	WCDMA	24
LTE (B1)	1920 ~ 1980	2110 ~ 2170	Tx: 18000 ~ 18599 Rx: 0 ~ 599	FDD	23
LTE (B2)	1850 ~ 1910	1930 ~ 1990	Tx: 18600 ~ 19199 Rx: 600 ~ 1199	FDD	23
LTE (B3)	1710 ~ 1785	1805 ~ 1880	Tx: 19200 ~ 19949 Rx: 1200 ~ 1949	FDD	23
LTE (B4)	1710 ~ 1755	2110 ~ 2155	Tx: 19950 ~ 20399 Rx: 1950 ~ 2399	FDD	23
LTE (B5)	824 ~ 849	869 ~ 894	Tx: 20400 ~ 20649 Rx: 2400 ~ 2649	FDD	23
LTE (B7)	2500 ~ 2570	2620 ~ 2690	Tx: 20750 ~ 21449 Rx: 2750 ~ 3449	FDD	23
LTE (B28)	703 ~ 748	758 ~ 803	Tx: 27210 ~ 27659 Rx: 9210 ~ 9659	FDD	23

Tabla 2: Parámetros de operación según banda de frecuencia

3. Estándares de comunicación inalámbrica

El módulo LE910C1-LA cumple con los estándares ANATEL, FCC y CNC.

Nota Este documento contiene material confidencial y de propiedad de Risco Group, Ltd. Se prohíbe estrictamente cualquier reproducción, uso o divulgación no autorizada de este material, o de cualquier parte del mismo. Este documento es para uso exclusivo de los empleados de Risco Group, Ltd. y los clientes autorizados de Risco Group, Ltd.





Se cree que el material proporcionado en este documento es exacto y confiable. Sin embargo, Risco Group, Ltd. no asume ninguna responsabilidad por el uso de este material. Risco Group, Ltd. se reserva el derecho de realizar cambios en el material en cualquier momento y sin previo aviso.

Copyright © 2022 Risco Group, Ltd. Todos los derechos reservados.

Los productos y nombres de empresas aquí mencionados pueden ser marcas comerciales y/o marcas comerciales registradas de sus respectivas empresas.



- IT

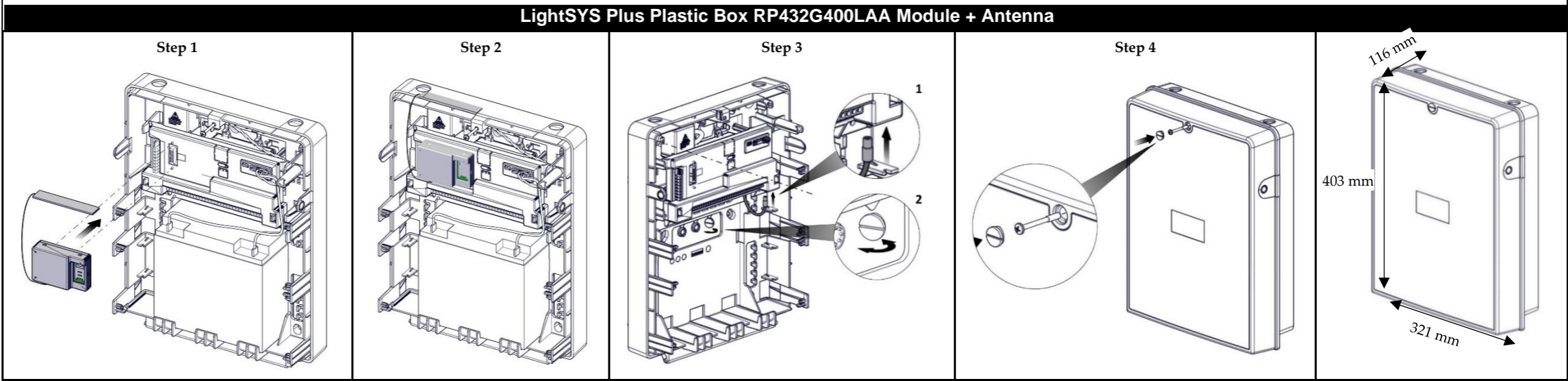
Istruzioni per l'installazione dei moduli RP432G400LAA nel contenitore LightSYS Plus
- ES

Instrucciones de instalación de la tarjeta RP432G400LAA en la caja de LightSYS Plus
- FR

Instructions d'Installation du Boîtier RP432G400LAA LightSYS Plus
- PR

Instruções de instalação módulos RP432G400LAA caixa LightSYS Plus
- NL

LightSYS Plus Box RP432G400LAA Installatie instructies



LightSYS Plus Metal Box RP432G400LAA Module + Antenna					
Step 1	Step 2	Step 3	Step 4	Step 5	Step 6
Step 7	<div><div></div><div></div></div> <div><p>Standard Limited Product Warranty ("Limited Warranty")</p><p>RISCO Ltd. ("RISCO") guarantee RISCO's hardware products ("Products") to be free from defects in materials and workmanship when used and stored under normal conditions and in accordance with the instructions for use supplied by RISCO, for a period of (i) 24 months from the date of delivery of the Product (the "Warranty Period"). This Limited Warranty covers the Product only within the country where the Product was originally purchased and only covers Products purchased as new.</p><p>Contact with customers only. This Limited Warranty is solely for the benefit of customers who purchased the Products directly from RISCO or from an authorized distributor of RISCO. RISCO does not warrant the Product to consumers and nothing in this Warranty obligates RISCO to accept Product returns directly from end users who purchased the Products for their own use from RISCO's customer or from any installer of RISCO, or otherwise provide warranty or other services to any such end user directly. RISCO's authorized distributor or installer shall handle all interactions with its end users in connection with this Limited Warranty. RISCO's authorized distributor or installer shall make no warranties, representations, guarantees or statements to its end users or other third parties that suggest that RISCO has any warranty or service obligation to, or any contractual privity with, any recipient of a Product.</p><p>Remedies. In the event that a material defect in a Product is discovered and reported to RISCO during the Warranty Period, RISCO shall accept return of the defective Product in accordance with the below RMA procedure and, at its option, either (i) repair or have repaired the defective Product, or (ii) provide a replacement product to the customer.</p><p>Return Material Authorization. In the event that you need to return your Product for repair or replacement, RISCO will provide you with a Return Merchandise Authorization Number (RMA#) as well as return instructions. Do not return your Product without prior approval from RISCO. Any Product returned without a valid, unique RMA# will be refused and returned to the sender at the sender's expense. The returned Product must be accompanied with a detailed description of the defect discovered ("Defect Description") and must otherwise follow RISCO's then-current RMA procedure published in RISCO's website at www.riscogroup.com in connection with any such return. If RISCO determines in its reasonable discretion that any Product returned by customer conforms to the applicable warranty ("Non-Defective Product"), RISCO will notify the customer of such determination and will return the applicable Product to customer at customer's expense. In addition, RISCO may propose and assess customer a charge for testing and examination of Non-Defective Product.</p><p>Entire Liability. The repair or replacement of Products in accordance with this Limited Warranty shall be RISCO's entire liability and customer's sole and exclusive remedy in case a material defect in a Product is discovered and reported as required herein. RISCO's obligation and this Limited Warranty are contingent upon the full payment by customer for such Product and upon a proven weekly testing and examination of the Product functionality.</p><p>Limitations. This Limited Warranty is the only warranty made by RISCO with respect to the Products. The warranty is not transferable to any third party. To the maximum extent permitted by applicable law, this Limited Warranty shall not apply and will be void if: (i) the conditions set forth above are not met (including, but not limited to, full payment by customer for the Product and a proven weekly testing and examination of the Product functionality); (ii) if the Products or any part or component thereof: (a) have been subjected to improper operation or installation; (b) have been subject to neglect, abuse, willful damage, abnormal working conditions, failure to follow RISCO's instructions (whether oral or in writing); (c) have been misused, altered, modified or repaired without RISCO's written approval or combined with, or installed on products, or equipment of the customer or of any third party; (d) have been damaged by any factor beyond RISCO's reasonable control such as, but not limited to, power failure, electric power surges, or unsuitable third party components and the interaction of software therewith or (e) any failure or delay in the performance of the Product attributable to any means of communication provided by any third party service provider, including, but not limited to, GSM interruptions, lack of or internet outage and/or telephony failure. BATTERIES ARE EXPLICITLY EXCLUDED FROM THE WARRANTY AND RISCO SHALL NOT BE HELD RESPONSIBLE OR LIABLE IN RELATION THERETO, AND THE ONLY WARRANTY APPLICABLE THERETO, IF ANY, IS THE BATTERY MANUFACTURER'S WARRANTY. RISCO does not install or integrate the Product in the end user's security system and is therefore not responsible for and cannot guarantee the performance of the end user's security system which uses the Product or which the Product is a component of.</p><p>This Limited Warranty applies only to Products manufactured by or for RISCO. Further, this Limited Warranty does not apply to any software (including operating system) added to or provided with the Products or any third-party software, even if packaged or sold with the RISCO Product. Manufacturers, suppliers, or third parties other than RISCO may provide their own warranties, but RISCO, to the extent permitted by law and except as otherwise specifically set forth herein, provides its Products "AS IS". Software and applications distributed or made available by RISCO in conjunction with the Product (with or without the RISCO brand), including, but not limited to system software, as well as P2P services or any other service made available by RISCO in relation to the Product, are not covered under this Limited Warranty. Refer to the Terms of Service at: www.riscogroup.com/warranty for details of your rights and obligations with respect to the use of such applications, software or any service. RISCO does not represent that the Product may not be compromised or circumvented; that the Product will prevent any personal injury or property loss by burglary, robbery, fire or otherwise, or that the Product will in all cases provide adequate warning or protection. A properly installed and maintained alarm may only reduce the risk of a burglary, robbery or fire without warning, but it is not insurance or a guarantee that such will not occur or will not cause or lead to personal injury or property loss. CONSEQUENTLY, RISCO SHALL HAVE NO LIABILITY FOR ANY PERSONAL INJURY, PROPERTY DAMAGE OR OTHER LOSS BASED ON ANY CLAIM AT ALL INCLUDING A CLAIM THAT THE PRODUCT FAILED TO GIVE WARNING.</p><p>EXCEPT FOR THE WARRANTIES SET FORTH HEREIN, RISCO AND ITS LICENSORS HEREBY DISCLAIM ALL EXPRESS, IMPLIED OR STATUTORY, REPRESENTATIONS, WARRANTIES, GUARANTEES, AND CONDITIONS WITH REGARD TO THE PRODUCTS, INCLUDING BUT NOT LIMITED TO ANY REPRESENTATIONS, WARRANTIES, GUARANTEES, AND CONDITIONS OF MERCHANTABILITY, FITNESS FOR A PARTICULAR PURPOSE, TITLE AND WARRANTIES AGAINST HIDDEN OR LATENT DEFECTS, TO THE EXTENT PERMITTED BY LAW. WITHOUT LIMITING THE GENERALITY OF THE FOREGOING, RISCO AND ITS LICENSORS DO NOT REPRESENT OR WARRANT THAT: (i) THE OPERATION OR USE OF THE PRODUCT WILL BE TIMELY, SECURE, UNINTERRUPTED OR ERROR-FREE; (ii) THAT ANY FILES, CONTENT OR INFORMATION OF ANY KIND THAT MAY BE ACCESSED THROUGH THE PRODUCT SHALL REMAIN SECURED OR NON-DAMAGED. CUSTOMER ACKNOWLEDGES THAT NEITHER RISCO NOR ITS LICENSORS CONTROL THE TRANSFER OF DATA OVER COMMUNICATIONS FACILITIES, INCLUDING THE INTERNET, GSM OR OTHER MEANS OF COMMUNICATIONS AND THAT RISCO'S PRODUCTS, MAY BE SUBJECT TO LIMITATIONS, DELAYS, AND OTHER PROBLEMS INHERENT IN THE USE OF SUCH MEANS OF COMMUNICATIONS. RISCO IS NOT RESPONSIBLE FOR ANY DELAYS, DELIVERY FAILURES, OR OTHER DAMAGE RESULTING FROM SUCH PROBLEMS. RISCO WARRANTS THAT ITS PRODUCTS DO NOT, TO THE BEST OF ITS KNOWLEDGE, INFRINGE UPON ANY PATENT, COPYRIGHT, TRADEMARK, TRADE SECRET OR OTHER INTELLECTUAL PROPERTY RIGHT IN ANY EVENT RISCO SHALL NOT BE LIABLE FOR ANY AMOUNTS REPRESENTING LOST REVENUES OR PROFITS, PUNITIVE DAMAGES, OR FOR ANY OTHER INDIRECT, SPECIAL, INCIDENTAL, OR CONSEQUENTIAL DAMAGES, EVEN IF THEY WERE FORESEEABLE OR RISCO HAS BEEN INFORMED OF THEIR POTENTIAL.</p></div>				